

MAGNETIC RESONANCE IMAGING

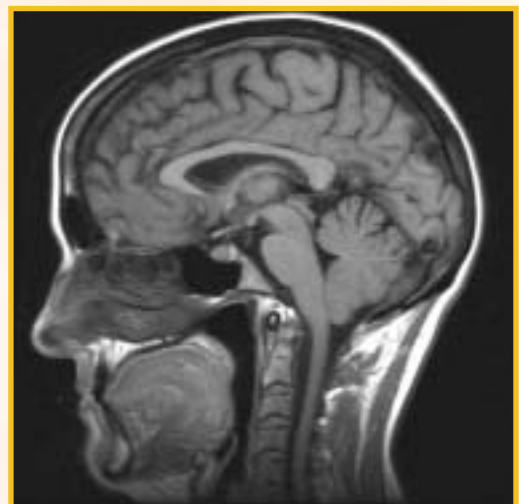
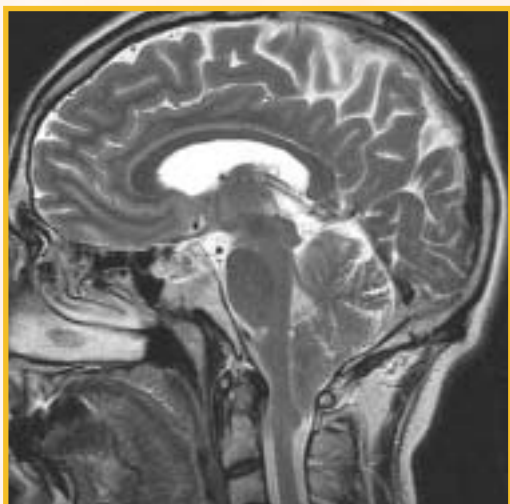
Illawarra Radiology Group

Illawarra Radiology Group (IRG) provides the only Medicare rebatable MRI scans in the Illawarra Region. The MRI unit, on site at 385C Crown Street, Wollongong, is a 1.5T General Electric and is able to perform MRI Musculoskeletal, MRI spine, MRI Brain scans. More detailed descriptions of available scans are found on our dedicated MRI referral pad, which we are happy to supply upon request.

MRI scans to be rebated by Medicare or Veteran Affairs can only be performed on a specialist referral. MRI scans for Workers Compensation and Third Party claims require prior approval. These and any Medicare ineligible patients may be referred by Specialist and/or General Practitioners.

MRI Radiologists

Five of IRG Radiologists are eligible MRI providers under the Medicare Regulations, "Specialist Radiologists' who are participants in the Royal Australian and New Zealand College of Radiologists (RANZCR) Quality and Accreditation Program and registered with the Health Insurance Commission". Collectively the IRG Radiologists have 30 years MRI experience between them, and all have a strong commitment to excellence and continuing education, especially so, in the area of MRI. Illawarra Radiology Group is a wholly owned subsidiary of Sonic Healthcare and therefore can call on Australia wide MRI resources if required.



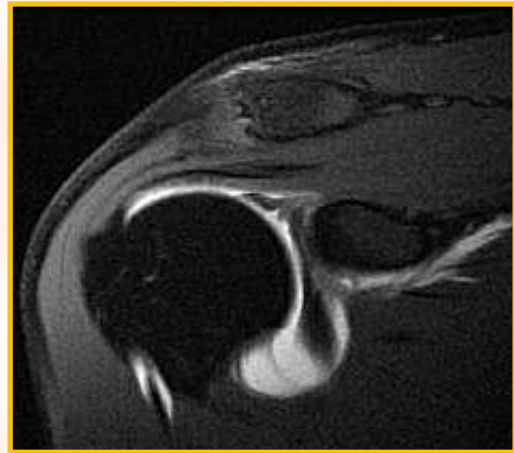
Information we require about your patients

- ❖ Do they weigh 136kg or more?
- ❖ Can they lie flat comfortably?
- ❖ Do they suffer from claustrophobia?
- ❖ Are they pregnant?

We ask the following questions because metal devices causes interference with the MRI machine and their presence during the MRI procedure may cause injury to the patient. It is important that staff at IRG are informed if these devices are present. Due to the increasing number of surgical implants used in

modern medicine it may be necessary to identify the implant by Model Number and Serial Number, to access MRI compatibility of the implanted device.

- ❖ Do they have a cardiac pacemaker?
- ❖ Do they have cerebral aneurysm clip(s)?
- ❖ Do they have neurostimulators?
- ❖ Do they have any metal implants or other surgical clips? (Type, Model, Serial number – if known)
- ❖ Do they have any metal shrapnel in their bodies or metal fragments in their eyes?
- ❖ Do they have hearing aids?
- ❖ Do they have a copper containing intra-uterine contraceptive device?



An appointment is necessary for all MRI procedures please contact IRG MRI staff on 02 4254 6908

If you need to talk directly with an *MRI Technician* please contact them on 02 4254 6907

If you need to talk directly to a *Radiologist* please contact them on 02 4228 7888

IRG Medical Imaging ACN 067 008 704 ABN 21 898 217 819

383 Crown Street, Wollongong NSW 2500 • Tel: (02) 4228 7888 Fax: (02) 4227 1409

Dr. Herbert Ho MB, BS, FRANZCR, DDU
Dr. Laurie Stevenson MB, BS, FRANZCR

Dr. Eric Chan MBA, MB, BS, FRANZCR, DDU
Dr. Ray Blumgart MB, ChB, FFRAD

Dr. R. Nikolich MB, BS, FRANZCR, DDR
Dr. Mark Chapman MB, BS, (Hons 1), FRANZCR

Dr. Sunny Li MB, BS, FRANZCR, DDU